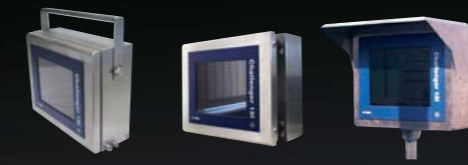


Enclosures



Field Desk Enclosure

- Hygienic, ergonomic Field Desk Enclosure to house the Display, Keyboard, Mouse or Trackball, Card Reader or Fingerprint
- Keyboard inclined by 30°
- Protection system IP 66 / NEMA 4X
- Stainless Steel 1.4301 opt. 1.4404
- Polished to 240 granulation



Customized Enclosures

Roof tiltable

Standard Enclosures: FHP

THE CHALLENGER COMPONENTS CAN BE INSTALLED IN ANY DESIRED ENCLOSURE BECAUSE ALL COMPONENTS FOR OPERATION AND VISUALISATION ARE CERTIFIED FOR INTRINSIC SAFETY INDEPENDENT OF THE ENCLOSURE.

OPTIONS

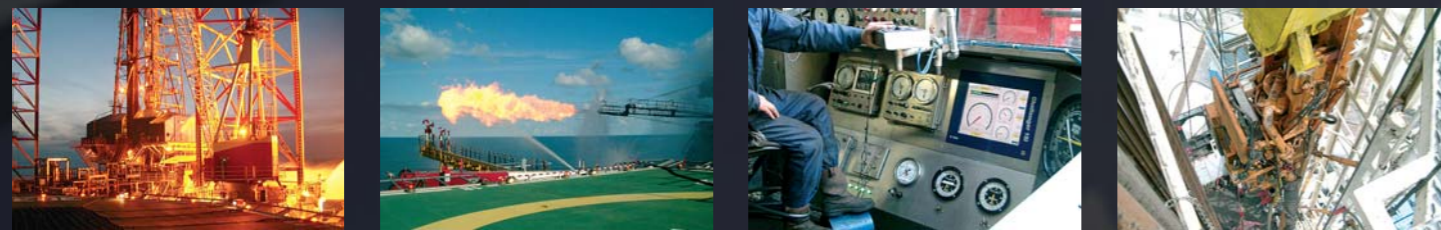
Camera:



Up to 4 Cameras

Video Camera
Ex-protected Video Camera as Ex-d model including separate CHALLENGER Interface UVI
Order Code: VCI

Further options on request



Ex Intrinsically Safe Equipment

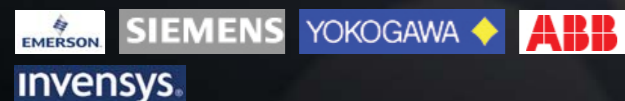
PC terminal
Notebook
Handheld PC
TFT Display
TFT Touch
Camera

Panel PC
Wireless Lan
Access Point
Joystick
Trackball
Touchpad

Access Control
RFI Card Reader

Drilling software
Camera software

Partner of:



tested by:



GECMA

A member of The MTL Instruments Group plc
DIN ISO 9001:2000 certified

GECMA Components GmbH
Heisenbergstrasse 26-40
50169 Kerpen
Germany

Phone: +49 (0) 22 37/69 96 - 0
Telefax: +49 (0) 22 37/69 96 - 99
e-mail: info@gecma.com
web: www.gecma.com

www.GECMA.com

* IBM is a registered trade mark of the INTERNATIONAL BUSINESS MACHINES CORPORATION
Subject to technical changes / No liability for printing errors and false statements

08/2006

Oil & Gas Industry

Ex Zone 1 / 2 (Gas)
Hazardous areas

CHALLENGER



Remote PC Terminals
for the Oil & Gas Industry

Ex Zone 1/2 hazardous areas

Class I, Div. 2 Groups A, B, C, D T4
Class I, Zone I



GECMA

A member of The MTL Instruments Group plc



BUILT-IN MODULES FOR

Drilling Cabins



Analyzer Stations



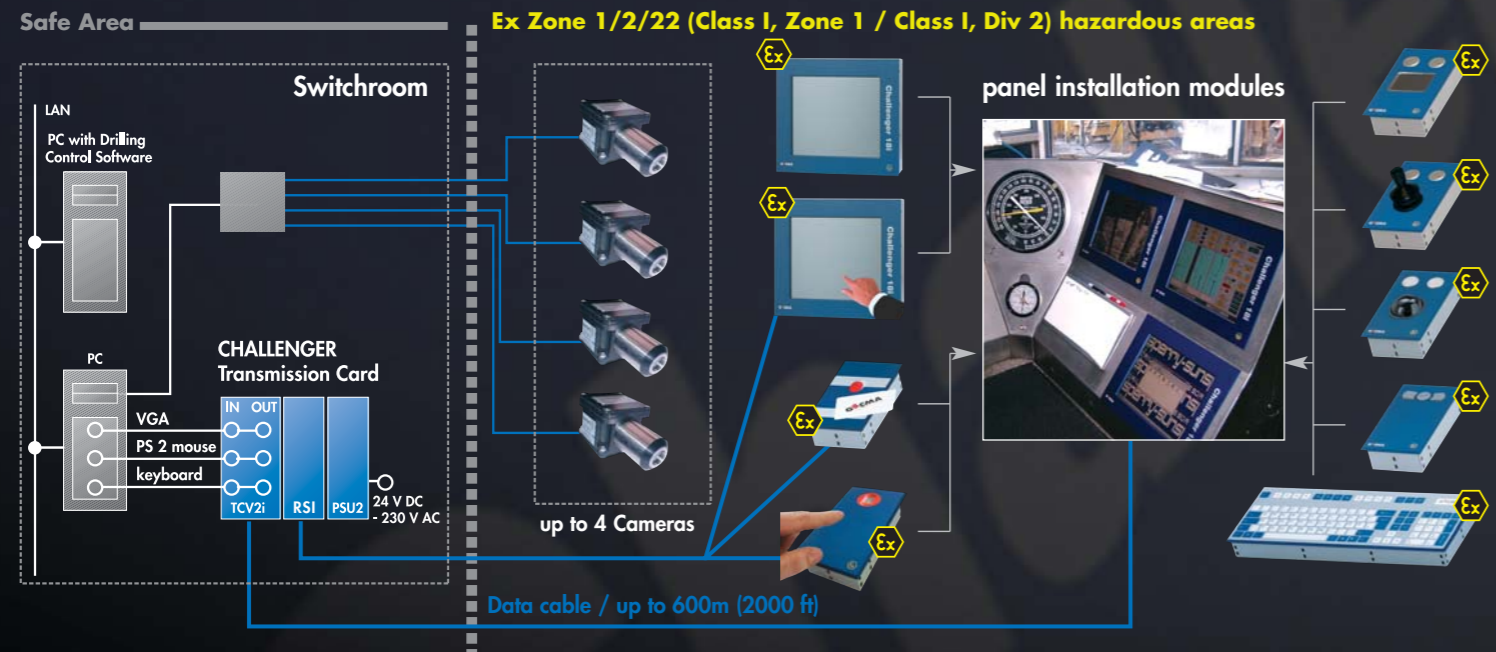
Loading Stations



Tank Farms



CHALLENGER OPERATING PRINCIPLE



FLEXIBLE MODULAR DESIGN

VISUALIZATION



TFT Display

- Panel mount design
- Protection class IP 66 from front / NEMA 4X
- 15" screen diagonal (up to XGA)
- 19" screen diagonal (up to SXGA)
- Capable of displaying more than 16 million colors
- Protection class II 2G Ex ib IIC T4
- ATEX/UL/C-UL/TIIS/IECEX/GOST-R GGTN
- DMT 00 ATEX E089 X



OPTION: High Brightness Display

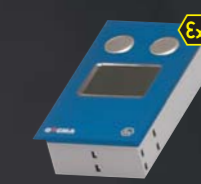
- High Brightness 650cd/m²
- Brightness control via sensor automatically or manually
- Protection class II 2G Ex ib IIC T4
- ATEX/UL/C-UL/TIIS/IECEX/GOST-R GGTN
- DMT 00 ATEX E089 X
- BVS 05 ATEX E020

OPERATION



OPTION: Touch Screen

- Touch Screen as foil or glass version
- Resistive touch foil
- 5-wire technology
- Can be operated with gloves, pen and fingers
- Connection: RS 232 serial interface
- Protection class II 2G Ex ib IIC T4
- ATEX/UL/C-UL/TIIS/IECEX/GOST-R GGTN
- TÜV 02 ATEX 1959



Touch Pad

- Panel mount design
- Protection class IP 66 from front / NEMA 4X
- Special resistive foil
- Optimum resolution – 200 dpi
- 2 pushbuttons
- Can be operated with gloves, pen and fingers
- Protection class II 2G Ex ia IIC T4
- ATEX/UL/C-UL/TIIS/IECEX/GOST-R GGTN
- TÜV 04 ATEX 2458



Joystick

- Panel mount design
- Protection class IP 66 from front / NEMA 4X
- High-precision mouse guidance
- Wearless up to 15 million actuations
- Extremely low-maintenance
- 2 pushbuttons, optionally 3 pushbuttons
- Button-in-joystick function optionally
- Protection class II 2G Ex ia IIC T4
- ATEX/UL/C-UL/TIIS/IECEX/GOST-R GGTN
- TÜV 04 ATEX 2459



Trackball

- Panel mount design
- Protection class IP 65 from front
- 55 mm ball
- 2 pushbuttons, optionally 3 pushbuttons
- Protection class II 2G Ex ib IIC T4
- ATEX/UL/C-UL/TIIS/IECEX/GOST-R GGTN
- DMT 00 ATEX E089 X



Keyboard

- Panel mount design
- Protection class IP 66 from front / NEMA 4X
- 105 keys, IBM* compatible
- Standard layouts: German, English, French, 30 other languages and special layouts on request
- Resistant against many solvents
- Protection class II 2G Ex ib IIC T4
- ATEX/UL/C-UL/TIIS/IECEX/GOST-R GGTN
- DMT 00 ATEX E089 X



Mouse

- Panel mount design
- Protection class IP 66 from front / NEMA 4X
- 4-step pressure-sensitive mouse guidance
- 2 pushbuttons
- Protection class II 2G Ex ib IIC T4
- ATEX/UL/C-UL/TIIS/IECEX/GOST-R GGTN
- DMT 00 ATEX E089 X

ACCESS CONTROLS



Card Reader

- Panel mount design
- Protection class IP 66 from front / NEMA 4X
- Non-contact identification
- Mifare protocol as standard (others on request)
- Suitable for the majority of company IDs
- Connection: RS 232 serial interface
- Protection class II 2G Ex ib IIC T4
- ATEX/UL/C-UL/TIIS/IECEX/GOST-R GGTN
- DMT 02 ATEX E141



Fingerprint sensor

- Panel mount design
- Protection class IP 66 from front / NEMA 4X
- Contact identification < 500 dpi
- Via C-MOS sensor
- Connection: RS 232 serial interface
- Protection class II 2G Ex ib IIC T4
- ATEX / GOST-R GGTN
- TÜV 03 ATEX 2251

Configure your individual CHALLENGER: www.GECMA.com